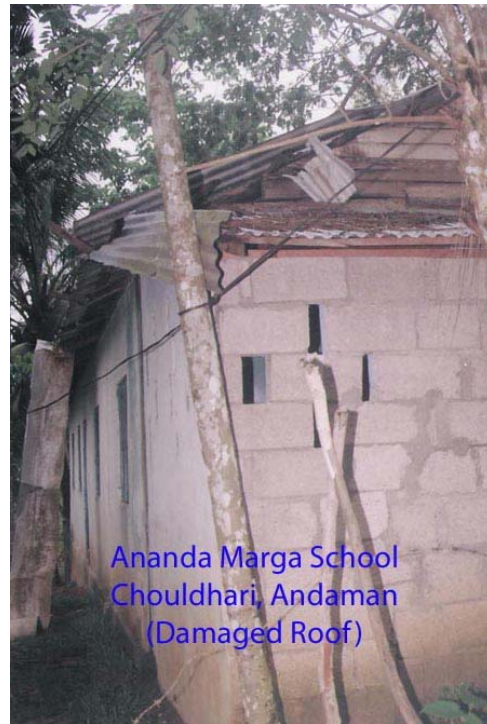


SCHEDULE OF QUANTITIES & BUDGET FOR THE PROPOSED SCHOOL BUILDING AT CHOULDHARI.



Sl.	Description of items	Quantities	Rate	Amount
1.	Earth work in foundation P/L Cement concrete excluding the cost of centering & shuttering Upto plinth level	40 cum. 9.00 cum.	Rs. 150 Rs. 2,800	6000 25,200
3.	P/L reinforcement cement concrete	33.50 cum.	Rs. 3,500	11,725
4.	Centering & shuttering including strutting , propping etc	73.76 sqm.	Rs. 130	9,300
5.	Reinforcement for R.C.C work Including straightening, cutting Bending,placing etc. Cold twisted bars	3000 Kgs.	Rs. 31	9,300
6.	Providing wood work in frames Wrought framed and fixed in Position. Second class teak wood.	.95 cum.	Rs. 4,000	38,000
7.	Providing and fixing paneled And glazed shutters for doors, Windows including screws etc 2 nd class deodar wood 40 mm Thick shutters	14.40 sqm.	Rs. 23,000	3,31,200
8.	Providing and fixing glazed Shutters for doors, windows a) 2 nd class deodar wood 35 mm. Thick	12.00 sqm.	Rs. 950.00	11,400
9.	Providing 40x5 mm flat iron Hold fast 40 cm long embedding In cement concrete block	92 each	Rs. 40.00	3,680
10.	Providing and fixing aluminium Sliding door 250x16 mm	7 each	Rs. 90.00	630
11.	Fixing aluminium sliding door 200x10 mm	36 each	Rs. 35.00	1,260
12.	Providing and fixing Aluminium Handles a) 125 mm, b) 100 mm	14 each 36 each	Rs. 35.00 Rs. 25.00	490 900

13.	Cement concrete flooring Finishing with a floating coat 40 mm thick with 20 mm n. size	94 sqm.	Rs. 175.00	16,450
14.	Cement plaster skirting 30 cm x 18 mm	76 sqm.	Rs. 110.00	8,360
15.	Providing & fixing glass strips In joints of concrete floor 40 mm wide and 6 mm thick	65 meter	Rs. 16.00	1,040
16.	15 mm thick cement plaster	177 sqm.	Rs. 75.00	13,275
17.	12 mm thick plaster of mix (inside)	294 sqm.	Rs. 80.00	23,520
18.	6 mm cement plaster to ceiling	64 sqm.	Rs. 95.00	6,080
19.	Finishing wall with water proofing Cement paint	80 sqm.	Rs. 25.00	2,000
20.	Finishing wall with multi surface Paint system	18 sqm.	Rs. 48.00	864
21.	Applying primer coat on wood work	18 sqm.	Rs. 15.00	270
22.	Providing surface drain - earth excavation, cement wall 15x15 cm	56 meter	Rs. 290.00	16,240
23.	Providing and laying hollow cement concrete block walling 200 mm up to floor five level	20 cum.	Rs. 2,900.00	58,000
24.	Providing & laying hollow concrete block on concrete mortar	4.5 cum.	Rs. 3,300.00	14,850

Total: Rupees Six Lakhs Ten Thousand Thirty Four only